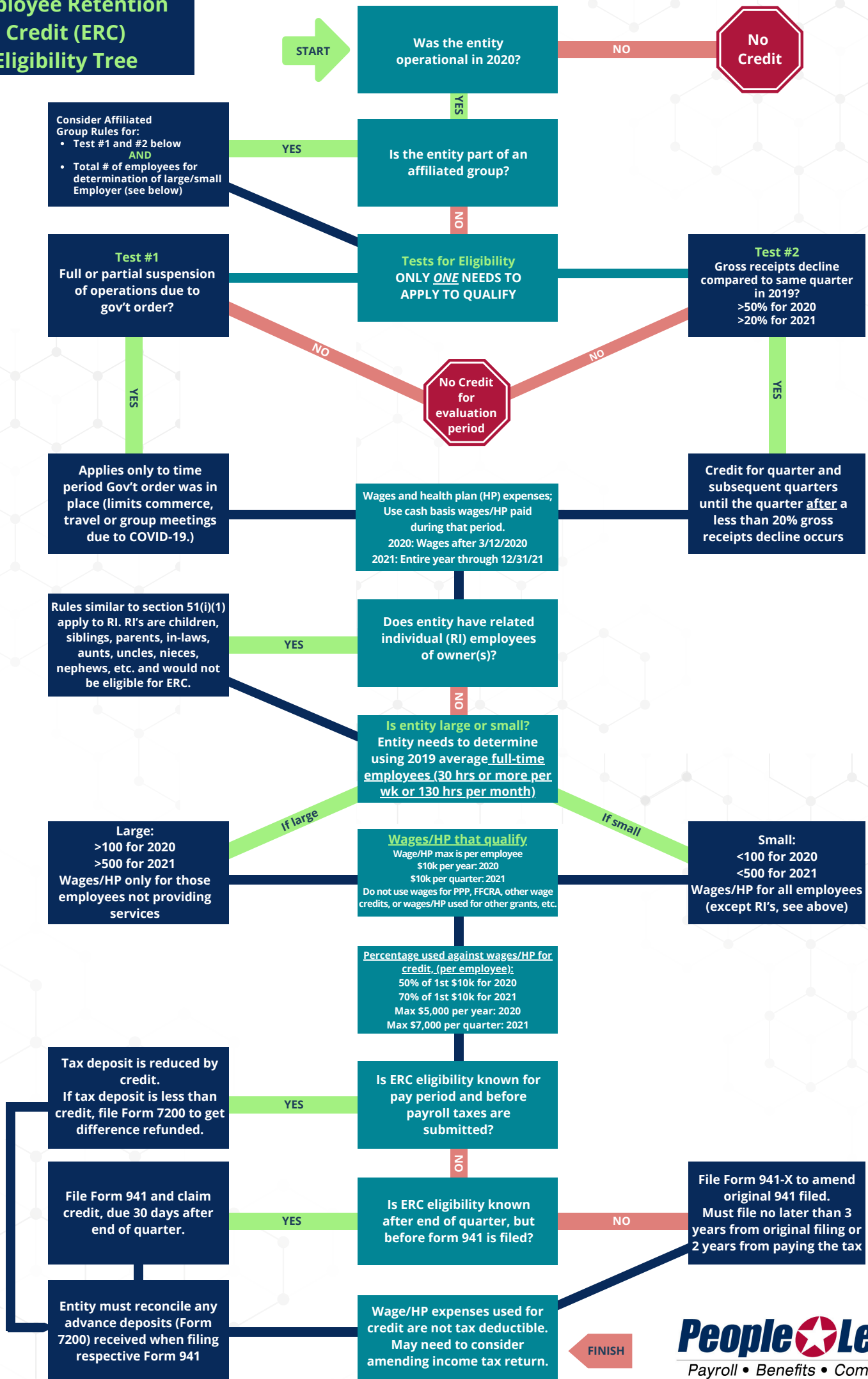


Employee Retention Credit (ERC) Eligibility Tree



Note: People Lease provides this information only for educational purposes based on the most current regulatory information available at the time it was written. It is People Lease's interpretation and any and all information included in this document should be confirmed to be true prior to using it for any submission of information and documents to any outside party. This document and information does not substitute obtaining legal advice if necessary in certain situations. Consult your legal counsel for legal advice if needed.